

A photograph of a wind turbine in a field. The turbine is tall and slender, with three blades. It is positioned in the center of the frame. In the foreground, there is a pond that reflects the turbine and the sky. The sky is overcast with grey clouds. The overall color palette is muted, with greys, blues, and browns.

# Statement of Qualifications

---

[www.camasllc.com](http://www.camasllc.com)

(458) 229-8392 | 680 G Street, Suite C | Jacksonville, OR 97530



Providing efficient, sustainable solutions with a focus on environmental stewardship

# Our Approach

Camas, LLC is dedicated to providing solutions to our clients facing complex environmental challenges.

Camas provides environmental consulting services to governments, businesses and land owners seeking assistance with projects that impact land and water. We assist with project components such as regulatory permitting, scientific analysis, land conservation, and compliance program development, as well as meeting facilitation related to any aspect of these processes.

We generate solutions at the intersection of science, policy and economics that enable all stakeholders to come away from the table knowing that the path forward is reasonable and benefits both environment and the bottom line. In order to generate effective solutions,

Camas provides access to experienced scientists, planners, and facilitators with extensive experience in permitting and environmental compliance on the federal, state, county, and city levels. Our projects include renewable energy & utility permitting, biological consulting and reporting, site remediation and restoration, sustainability and conservation.

Camas takes great pride in playing a part in our clients' successes and in the ways that all of our efforts contribute to a more sustainable future.

DIANE BARR, Principal



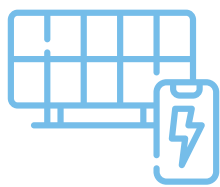
# Our Services

Renewable Energy & Utility Permitting  
Biological Consulting  
Site Remediation & Restoration  
Permitting (Local, State, & Federal)

Compliance Programs  
Sustainability & Conservation  
FEMA & HUD Programs



From permitting an entire wind facility to operations and maintenance, Camas provides all your permitting needs.



From siting right down to mitigation measures, Camas is your partner throughout the solar permitting process.



Camas has been working in the full lifecycle of the hydroelectric utility world for over 20 years. From licensing to dam removal, we can help.



Camas works throughout the United States with leading energy providers like Pacific Power and Brookfield.



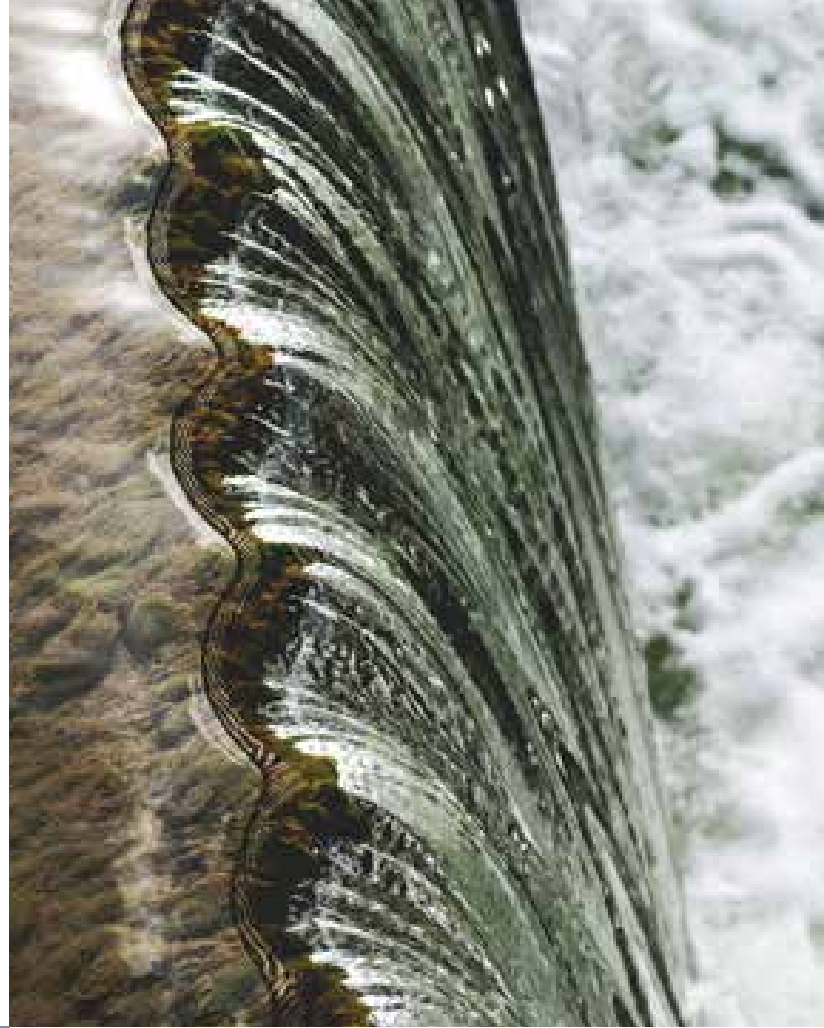
*Camas, LLC is an extraordinarily effective environmental and regulatory specialist firm. They combine an eye for detail with the ability to translate the regulatory fine print into a summary of facts that not only identifies the relevant considerations but also has practical meaning for a business.*

**KEN KASER, COO** Brookfield Renewable Energy Group



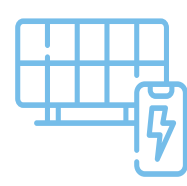
# Renewable Energy & Utility Permitting

Camas is a leading provider in renewable energy and utility services. We help our clients obtain all necessary permits from local entities through state and federal agencies. Whether it's wind, solar, hydro, or transmission, we can help. If you are looking for Conditional Use Permits to Streambed Alteration Agreements, FERC Licensing or any other special permits, Camas will deliver in a timely and cost-efficient manner.



## Services & Expertise

- Wind
- Solar
- Hydro
- Transmission
- FERC Licensing & Compliance
- Project Siting
- Landowner Agreements





# Biological Consulting

At Camas we know that ground and stream disturbance permits require mitigation of impacts to fish and wildlife. We negotiate up-to-date, scientifically-proven permit terms that ensure species protection from construction and production activities. We provide initial biological and habitat monitoring before your project begins, construction monitoring during your project, and compliance monitoring for years after project completion. We have worked with various federal and state endangered and threatened species and are proud to be a part of conservation initiatives that protect these animals and plants.

## Services & Expertise

- Wildlife Monitoring
- Habitat Monitoring
- Terrestrial, Aquatic & Plant Species Protection, including
  - Federal & state ESA Listed Species
  - Other Protected Species (such as state Species of Special Concern)
  - Migratory Birds
- Fire Emergency Management
- GIS Data Collection & Mapping



# Site Remediation & Restoration

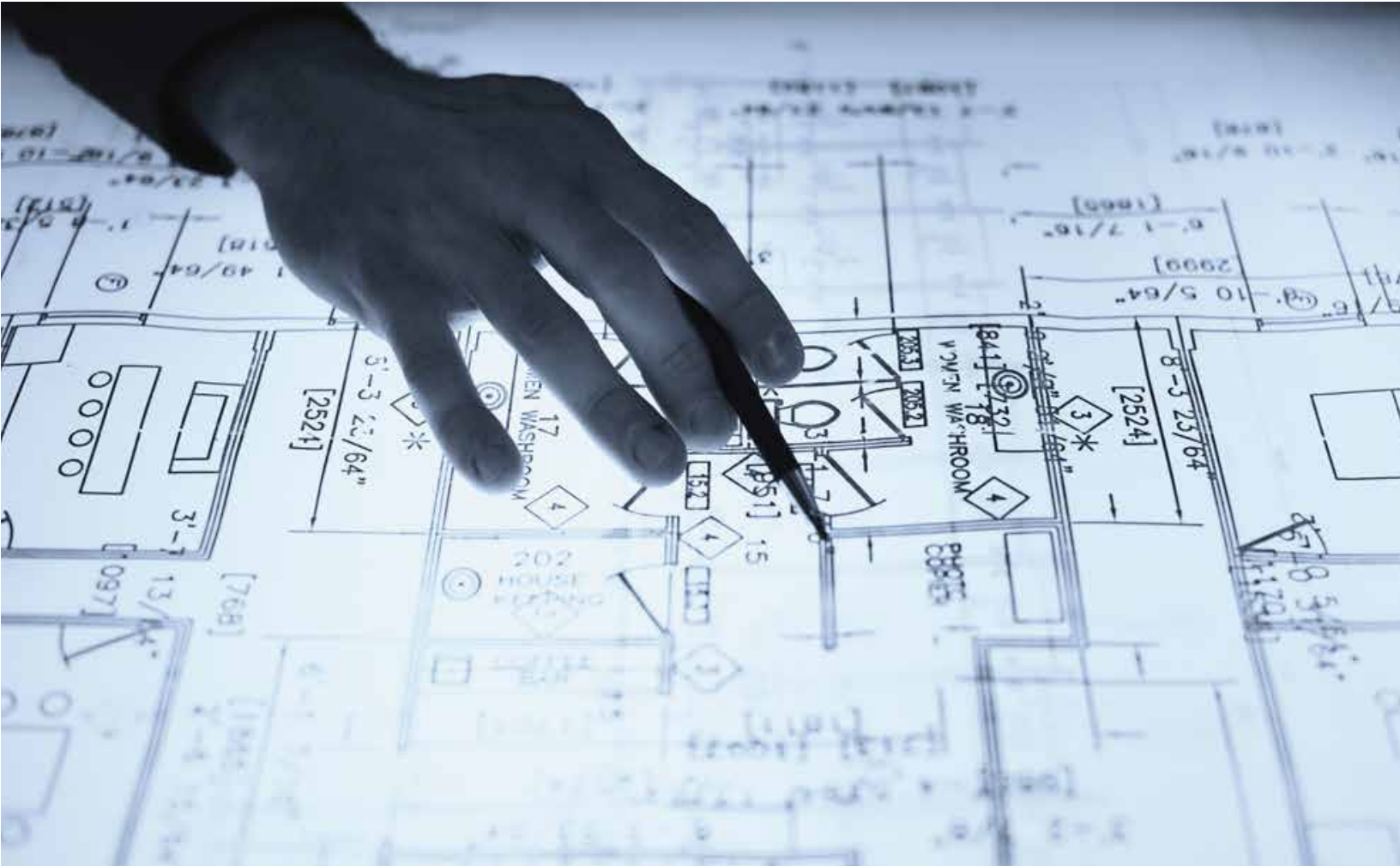
From a permitting and compliance standpoint, a project lives on after construction activities have ceased. Many permits require site restoration and environmentally-sensitive O&M activities. Camas not only helps you develop restoration plans, tailored specifically to the project, but will be there through the implementation and monitoring process as well.

Camas also provides remediation services if you require pollution cleanup programs. We use up-to-date scientific methods and provide alternatives analyses to determine the best solution for your needs. As described above, we will also be there for any remediation restoration efforts.



## Services & Expertise

- Revegetation/Planting
- Stream Restoration
  - Dredging
  - Bank Stabilization
- Fish Recovery
- Bioremediation
  - Phytoextraction
  - Bioventing
- Mitigation Plans
- Feasibility Studies



# Local Permitting & Compliance

Camas has experience with City and County building and planning permitting. We have worked with personnel within all tiers of government to provide cost-efficient solutions that comply with land use ordinances and plans. Camas provides preliminary environmental assessments and ensures that those assessments provide firm ground for the permitting process. Camas keeps you updated throughout the process so that you have an informed experience and achieve expected results.

## Services & Expertise

- Land Use Planning
- Phase I and Phase II ESA
- Environmental Reviews
- Alternative Analyses
- HUD/NEPA
  - Exempt Findings
  - Categorical Exclusions
  - Environmental Assessments
  - Environmental Impact Statements
- Mitigation Plans



# State/Federal Permitting & Compliance

Camas helps our clients maneuver through state and federal permitting requirements across the United States. Whether your project must comply with state statutes, like CEQA and SEPA, or has federal requirements, such as NEPA or ESA compliance or FERC Licensing process, Camas is there to ensure that permitting is accomplished efficiently and correctly. Camas facilitates client and agency interactions that result in the shortest possible permitting timelines. By establishing these communication channels early in the process, Camas is able to develop permitting packages that are easily reviewed and approved by regulators. Both the client and relevant agencies are then confident that compliance measures meet the needs of all parties.



## Services & Expertise

- California Lake or Streambed Alteration Agreements
- Regional Water Quality Control Board (RWQCB) Permits
- California Environmental Quality Act (CEQA)
- Washington State Environmental Policy Act (SEPA)
- FERC Licensing
- FERC Dam & Public Safety
- NEPA Compliance
- Field Monitoring
- Biological Mitigation Measures
- Incidental Take Permits (State & Federal)
- SWPPP Development and Monitoring





# Compliance Programs

Camas knows that compliance programs are essential to reducing client risk. Each project comes with its own specific environmental compliance measures and that maneuvering through all of the regulations can be overwhelming. Camas identifies and addresses every regulation and potential obstacle so our clients are aware of potential risk and how to mitigate them before they become a violation. Our experts comb through every detail within compliance documents and establishes a deliverable outlining the exact measures for compliance. Camas works closely with our clients throughout the process and provides innovative solutions to meet all compliance measures.

## Services & Expertise

- Endangered Species Act
- Clean Water Act
- Clean Air Act
- The National Environmental Policy Act
- California Environmental Quality Act
- Washington State Environmental Policy Act
- ISO 14001 Compliance Programs

# Sustainability & Conservation

**Sustainability:** Camas assists our clients with sustainable practices certifications in the winery and green building industries. We provide an initial facility/site review and assessment to determine eligibility based on current standards. We then prepare the certification application and provide up-to-date scenarios to meet sustainability goals while representing your best interests throughout the process.

**Conservation:** Camas works with clients to meet their land conservation goals. From stream restoration, conservation land exchanges and easements, or simply the improvement of existing land use practices to be more responsive to current water and energy limitations, Camas is there to support your needs.



## Services & Expertise

- Certified California Sustainable Winegrowing (CCSW)
- Sustainability in Practice (SIP)
- Low Input Viticulture and Enology (LIVE)
- Leadership in Energy and Environmental Design (LEED)
- Energy Star
- National Green Building Standard





# FEMA & HUD Programs

**FEMA:** Camas has the capabilities to assist FEMA during disaster recovery to swiftly prepare all required NEPA documentation.

**HUD:** Camas has a wealth of experience with HUD Grant Implementation. We have worked with personnel within all tiers of government to provide responsible entities with cost-efficient solutions that comply with NEPA standards.

## Services & Expertise

- Regulatory Approvals
- Reporting & Filings
- Multi-party Agreements
- Environmental Monitoring
- NEPA Analysis
- Phase I & Phase II ESA
- Grant Administration Assistance
- Scientific & Socio-Economic Analysis



# Featured Projects



## Pacific Power Transmission Grid Expansion

**Location:** Crook County, Oregon

**Client:** PacifiCorp

**Overview:** PacifiCorp is providing additional transmission capacity to a large industrial customer located in Crook County, Oregon that includes three substations and multiple miles of transmission line. Camas is responsible for obtaining the necessary Crook County Conditional Use Permits, landowner approvals, as well as providing biological monitoring for sensitive nesting bird species. Camas acts as the interface between PacifiCorp and agencies such as Oregon Department of Fish & Wildlife and US Fish and Wildlife Service.

## City of Medford HUD Grant Implementation

**Location:** Medford, Oregon

**Client:** City of Medford

**Overview:** City of Medford

**Overview:** The City of Medford has taken on the role of Responsible Entity to obtain Housing and Urban Development (HUD) Community Block Development Grants (CBDG). The grants allow the City to build affordable housing for low-income families. Camas guides the City of Medford through the HUD National Environmental Policy Act (NEPA) process and provides additional environmental analysis such as Phase I and II Environmental Site Assessments. To date, Camas has helped acquire funds for eight affordable housing projects and that number continues to grow.

## Mustang Hills Wind Facility

**Location:** Kern County, California

**Client:** Mustang Hills, LLC

**Overview:** In October of 2015 a flood event occurred in Kern County that resulted in extensive damage to roads inside the Mustang Hills wind energy facility. Camas supported the wind facility by preparing a CDFW Streambed Alteration Agreement (SAA) and RWQCB 401 Water Quality Application. During construction Camas ensured permit compliance by performing necessary biological and construction monitoring as well as implementing re-vegetation compliance measures, such as hydroseeding and shrub plantings. Camas is responsible for the Kern County Conditional Use Permit and Mustang Hills Incidental Take Permit ongoing compliance. In addition, Camas has recently completed a SAA for Operation and Maintenance of the wind facility with a lifespan of 30 years.

## Harbor PUD Ranney Well Intake Rehabilitation

**Location:** Harbor, Oregon

**Client:** Harbor Water PUD

**Overview:** Salt water is being drawn into Harbor PUD's Ranney Collector located on the Chetco River due to the changing river dynamics and loss of gravel over the Ranney Collector. Camas has assisted Harbor PUD in performing a root cause analysis. The next phase is to obtain regulatory approvals for replenishing the gravel. Camas provides support during the permit application process and acts as the interface between Harbor PUD, Army Corps of Engineers and National Marine Fisheries Service. Camas also provides support for Harbor PUD's grant application efforts.

## Hydro Resources Public Safety Program

**Location:** North America

**Client:** Brookfield Renewable Partners

**Overview:** Brookfield adopted the Canadian Dam Association (CDA) Guidelines for conducting risk assessments on their 218 hydro facilities. Camas supports Brookfield by providing training for key personnel on CDA methodology, supporting staff during risk assessments and preparing findings reports. In addition to training, Camas provides easy-to-follow reporting templates so that employees may create future risk assessment reports without assistance.